

Multifocal Cancer

West Valley Imaging - Las Vegas, NV

Breast-Specific Gamma Imaging with the Dilon 6800

Clinical History

62 year-old female with a history of relatively fatty breast tissue with somewhat dense bilateral parenchyma.

Mammogram

Irregular mass in the retroareolar portion of the right breast with skin thickening and nipple retraction. BIRADS 5

Ultrasound

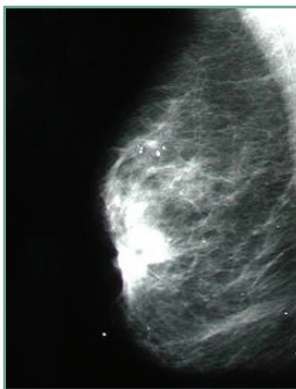
Solid mass noted corresponding to the mammographic density measuring 1.8 cm x 1.7 cm x 1.6 cm.

Breast-Specific Gamma Imaging

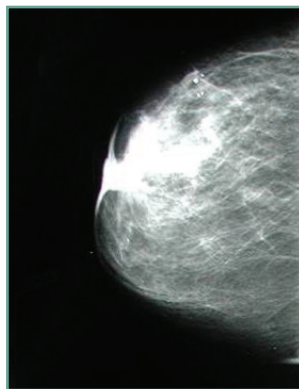
Two areas of focal uptake noted. The first focus corresponds to the sonographic density, measuring approximately 1.6 cm x 1.3 cm x 1.9 cm. The second focus proximal to the first and slightly superior and posterior measuring approximately 1.3 cm x 0.7 cm x 1.2 cm.

Histopathology Findings

Both areas are confirmed as invasive papillary carcinoma.



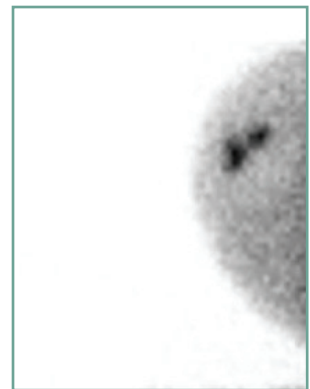
RMLO mammogram



RCC mammogram



RMLO BSGI



RCC BSGI

BSGI detected a second area of papillary carcinoma demonstrating a greater extent of disease than shown with mammography or ultrasound.



Dilon Technologies LLC

12050 Jefferson Avenue; Newport News, VA 23606

Phone: 757.269.4910; Fax: 757.269.4912; www.dilon.com

