

# Confirmed Suspicious Radiodensity

West Valley Imaging - Las Vegas, NV

## Breast-Specific Gamma Imaging with the Dilon 6800

### Clinical History

57 year-old female with stable fatty breast tissue.

### Mammogram

10 mm irregular density with lobulation in the upper-outer quadrant of the breast; new development since prior year's films. BIRADS 4

### Ultrasound

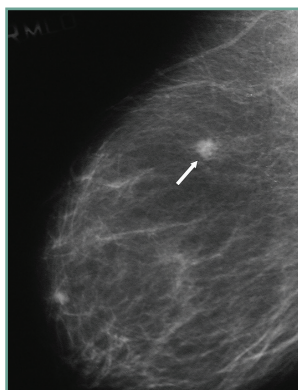
No cystic or solid findings noted in the region.

### Breast-Specific Gamma Imaging

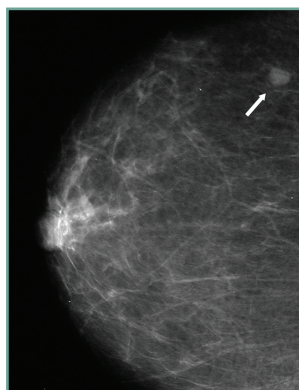
High intensity focus in the upper outer quadrant consistent with size and location of mammographic density. Highly suspicious for malignancy.

### Histopathology Findings

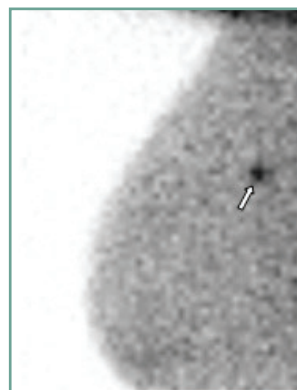
Infiltrating ductal carcinoma.



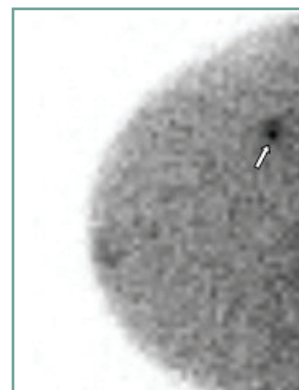
RML0 mammogram



RCC mammogram



RML0 BSGI



RCC BSGI

This case demonstrates the high level of image correlation to mammography that is available with BSGI. It is a powerful advantage to be able to directly compare the images from both modalities.

