

# Incidental Cancer

George Washington University Medical Center - Washington, D.C.

## Breast-Specific Gamma Imaging with the Dilon 6800

### Clinical History

Left breast, indeterminate mass warranting additional evaluation. BIRADS 3.

### Mammogram

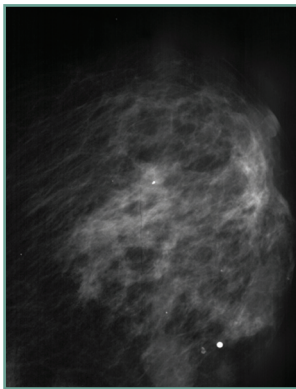
Left breast: 2 x 1.8 cm palpable mass. BIRADS 3.

### Breast-Specific Gamma Imaging

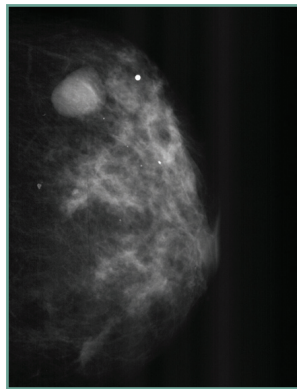
High focal uptake immediately behind the area of the nipple extending toward the lateral aspect, anterior to the mass noted in mammography. POSITIVE.

### Histopathology Findings

Papillary carcinoma



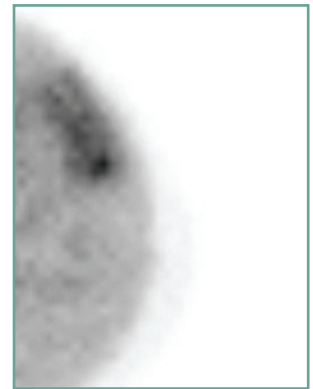
LMLO mammogram



LCC mammogram



LMLO BSGI



LCC BSGI

The area of papillary carcinoma correctly identified by BSGI is anterior to the mass noted in the mammogram.

