

False Negative - 4 mm Low Grade Ductal Carcinoma

St. Joseph Medical Center - Houston, TX

Breast-Specific Gamma Imaging with the Dilon 6800

Clinical History

Patient, 51 years old, presents with new mass in the left breast. Patient has very dense breast tissue and a history of breast cancer with multiple biopsies.

Mammogram

Very dense breasts with post-surgical changes. BIRADS 2.

Ultrasound

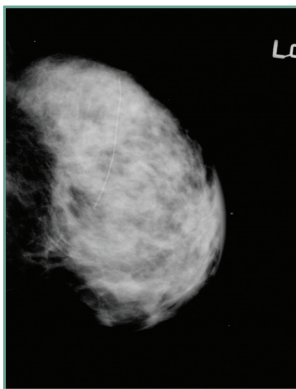
No focal abnormality.

Breast-Specific Gamma Imaging

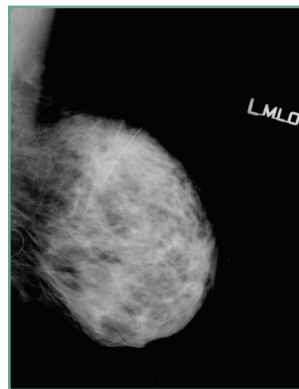
Bilaterally negative study.

Histopathology Findings

Excisional biopsy. Low grade 4 mm residual ductal carcinoma.



LCC mammogram



LMLO mammogram



LCC BSGI



LMLO BSGI

Although sensitivity for detecting DCIS with BSGI is quite high, like all imaging modalities, false negatives can and do happen.

