

# Surgical Scar with True Negative BSGI

George Washington University Medical Center – Washington, D.C.

## Breast-Specific Gamma Imaging with the Dilon 6800

### Clinical History

Patient presents one year after lumpectomy and axillary dissection, radiation and chemotherapy for high grade infiltrating mammary carcinoma.

### Mammogram

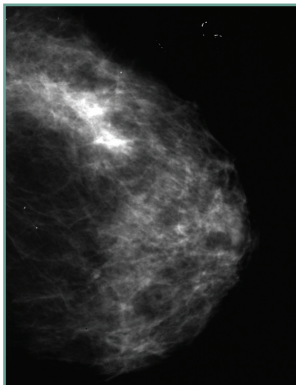
Probable post-surgical scar in left breast. Suggest six-month follow-up. BIRADS 3.

### Breast-Specific Gamma Imaging

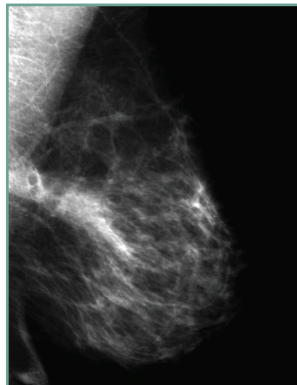
Normal study.

### Histopathology Findings

At 12-month follow-up, no evidence of malignancy. No biopsy.



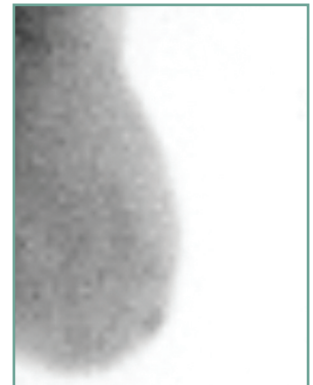
LCC mammogram



LMLO mammogram



LCC BSGI



LMLO BSGI

Using mammography to monitor for cancer recurrence in the tissue. The functional imaging provided by BSGI is not obscured by the presence of scar tissue and therefore can aid in the detection of recurrent disease.

