

# True Positive – BSGI Aids Biopsy Target Selection

George Washington University Medical Center – Washington, D.C.

## Breast-Specific Gamma Imaging with the Dilon 6800

### Clinical History

Patient with palpable mass in right breast. No family history of breast disease. Patient experienced early onset menses and has been on hormone replacement therapy for 14 years.

### Mammogram

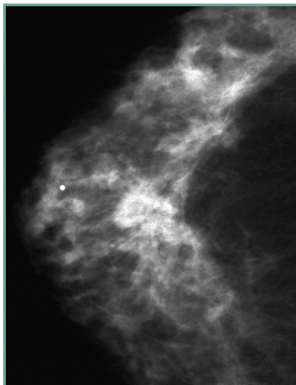
Interval development of two masses in the upper-outer quadrant of the right breast from previous year. BIRADS 4.

### Breast-Specific Gamma Imaging

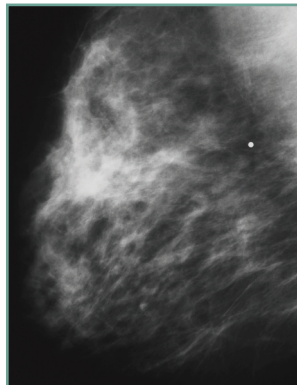
High-intensity focus in the right breast. Highly suspicious of malignancy.

### Histopathology Findings

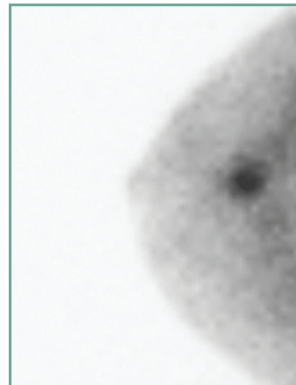
3 cm infiltrating carcinoma.



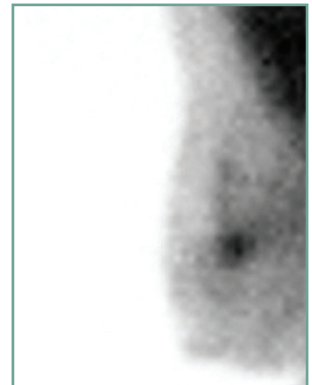
RCC mammogram



RMLO mammogram



RCC BSGI



RMLO BSGI

In cases with more than one suspicious area noted in the mammogram, BSGI can provide metabolic information to aid in biopsy target selection.



Dilon Technologies LLC

12050 Jefferson Avenue; Newport News, VA 23606

Phone: 757.269.4910; Fax: 757.269.4912; [www.dilon.com](http://www.dilon.com)

