

what if?

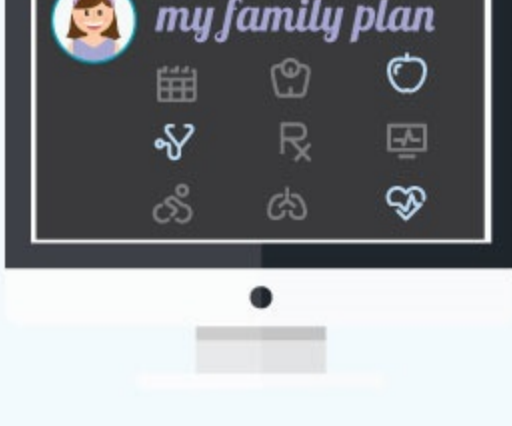
Your healthcare revolved around you.

AT GRAND LAKE HEALTH SYSTEM, IT DOES



We are the first in the region to adopt the Patient-Centered Medical Home (PCMH)—a patient-focused model of healthcare delivery that puts you and your doctor in control of your health and wellness.

It's all about you + your family.



Despite its name, the **Patient-Centered Medical Home** is not an actual place or home care service. It's a "home" for everything having to do with ***your personal healthcare.***

With the PCMH, every aspect of your care is coordinated by your primary care provider; the medical professional who knows you best.

From preventive care and prescriptions to specialist referrals, tests, surgical procedures, and hospital stays, your personal doctor and support team coordinate it all. And they use secure information technologies to make the whole process **MORE EFFICIENT AND YOUR CARE MORE EFFECTIVE**—all while keeping you in the loop along the way.



At Grand Lake, we use the PCMH to make the care we provide you and your family better and more personal than ever before.

It's healthcare the way it should be.

what if?

You could stick with one healthcare team for your entire life.

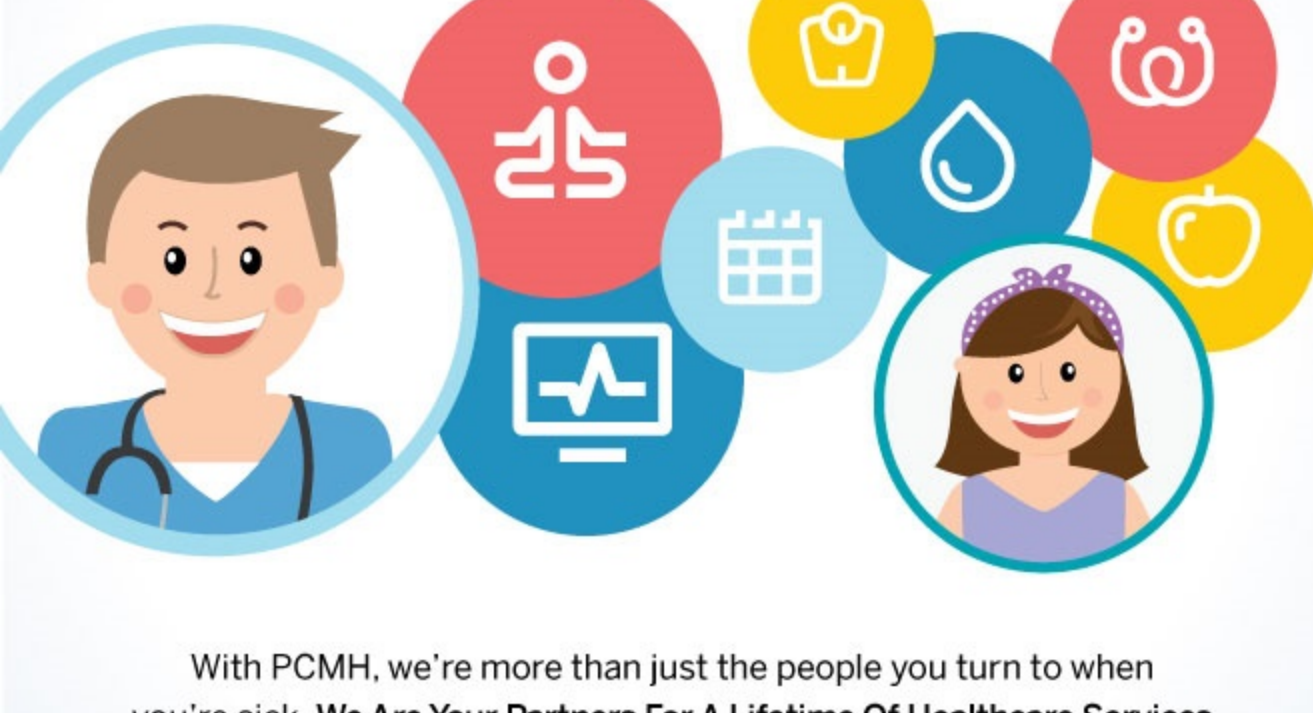


Grand Lake
HEALTH SYSTEM

The Grand Lake PCMH gives you one team of trusted advisors and care providers for you and your whole family, for every stage of life—from newborn babies to their great-grandparents.

what if?

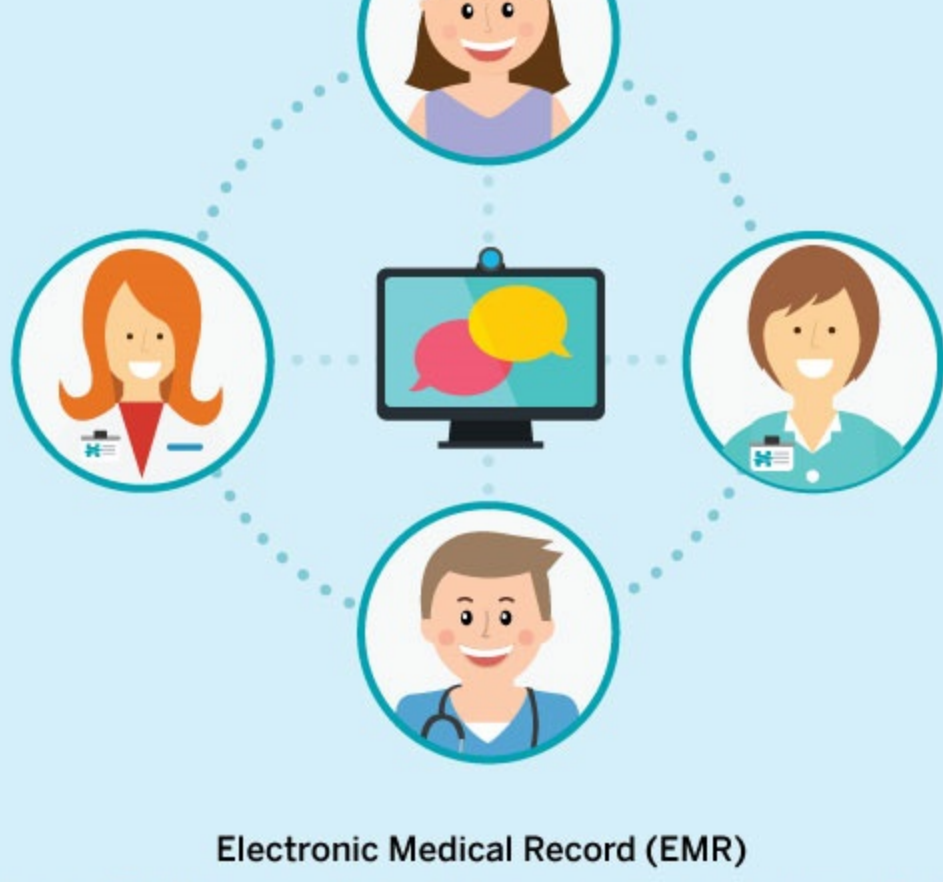
Your doctor helped you be more proactive with your health and wellness.



With PCMH, we're more than just the people you turn to when you're sick. **We Are Your Partners For A Lifetime Of Healthcare Services** that keep you well. This includes proactive scheduling for preventive care such as checkups and routine tests.

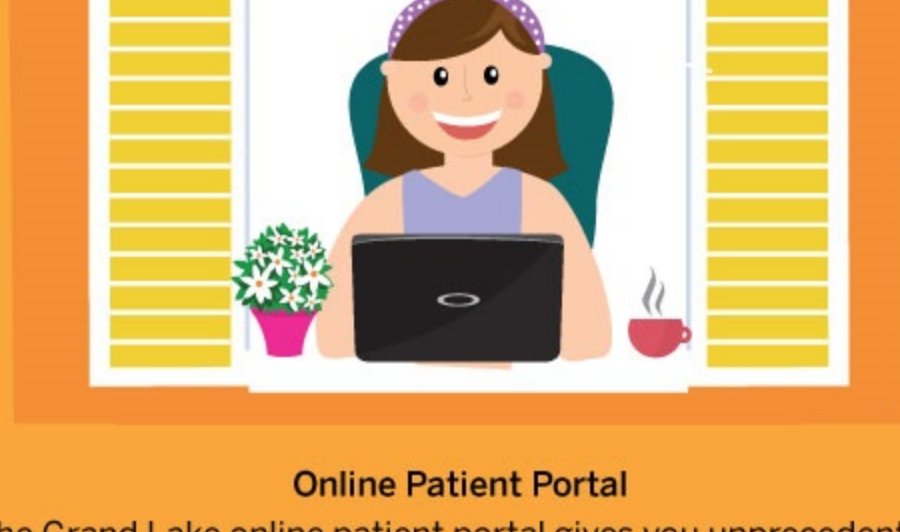
what if?

Technology actually made your healthcare more personal.



Electronic Medical Record (EMR)

Your secure EMR ensures that all of your doctors and specialists are on the same page, which means less explaining and paperwork during your visits and more time for you and your doctor to talk.



Online Patient Portal

The Grand Lake online patient portal gives you unprecedented access to your care team and health information. Just log in using your computer, smartphone, or mobile device and you can keep track of your family's care and health from anywhere, at any time.



GRAND LAKE
HEALTH SYSTEM

To learn more about how Grand Lake Health System is improving healthcare for you and your family with the Patient-Centered Medical Home, visit

GrandLakeHealth.org/PCMH



Your Grand Lake Health System. For all the **what ifs** in life.